

CUI

CITY & URBAN INTERNATIONAL

Warwick Lane, Maclaren House, W14

£3,500 pcm



Full Description

SHORT TERM ONLY. Located within this prestigious portered building close to Kensington High Street, is this luxury all inclusive one bedroom apartment, offered fully furnished to a high spec for immediate occupancy.

The apartment offers a bright open plan lounge with Balcony, a fully fitted kitchen, a double bedroom with fitted wardrobes and a family bathroom. Royal Warwick Square is located a short walk to multiple tube lines and Kensington High Street. Residents benefit from a 24 hour concierge, gym and residents spa facilities.

Bills included



Features

- Portered building close to Kensington High Street
- 24 hour concierge, gym and residents spa facilities
- All Bills included

Contact Us

CUI

25 Phipp Street, London

EC2A 4NP

T: 02077293344

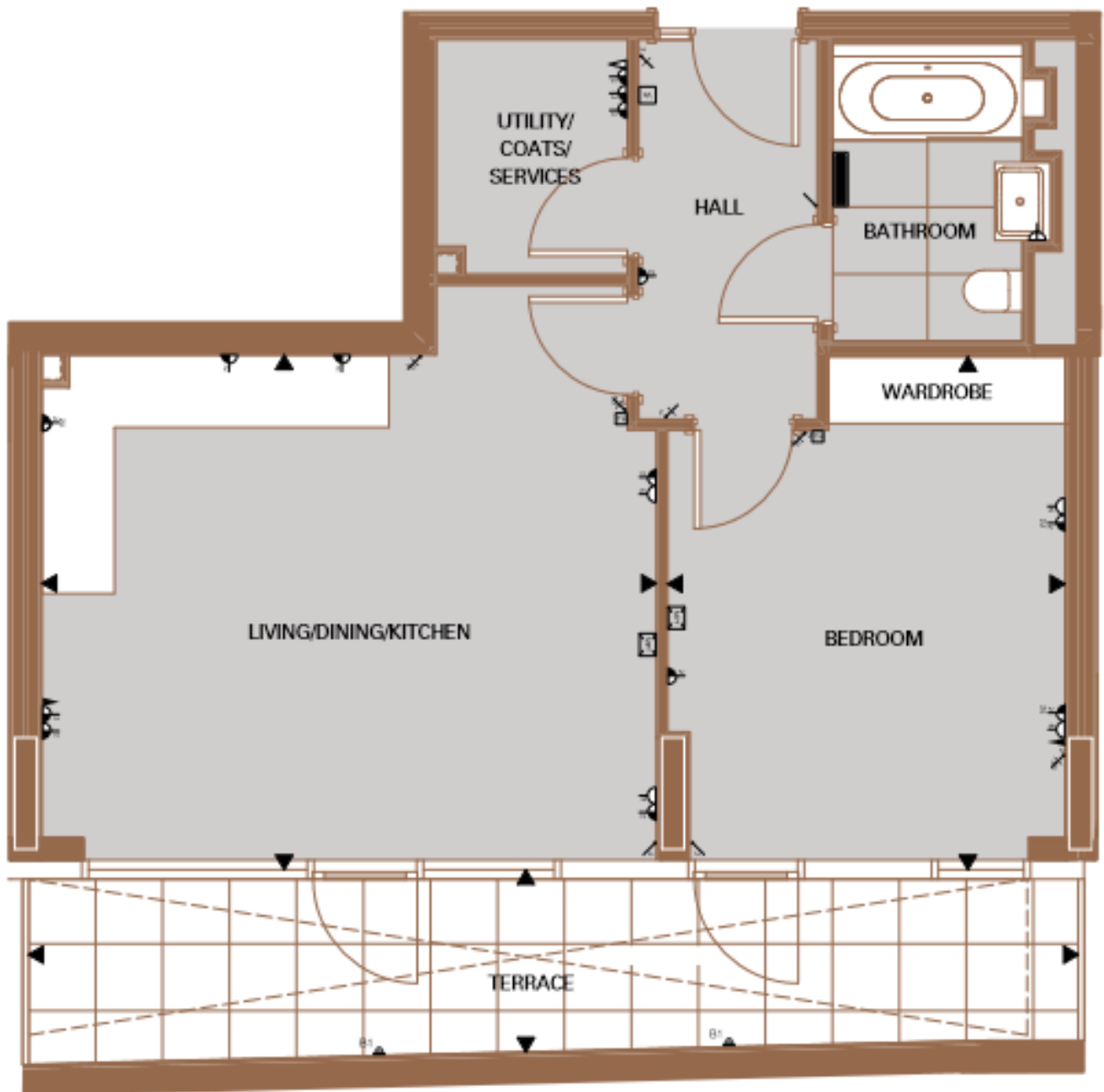
E: shoreditch@cityandurban.com



Energy Efficiency Rating		Current	Potential
Very energy efficient - lower running costs			
(92-100) A			
(81-91) B			
(69-80) C		79	79
(55-68) D			
(39-54) E			
(21-38) F			
(1-20) G			
Not energy efficient - higher running costs			
England, Scotland & Wales		EU Directive 2002/91/EC	

Environmental (CO ₂) Impact Rating		Current	Potential
Very environmentally friendly - lower CO ₂ emissions			
(92-100) A			
(81-91) B		85	85
(69-80) C			
(55-68) D			
(39-54) E			
(21-38) F			
(1-20) G			
Not environmentally friendly - higher CO ₂ emissions			
England, Scotland & Wales		EU Directive 2002/91/EC	





Living/Dining/Kitchen	5525mm x 4615mm	18' 1" x 15' 2"
Bedroom	4600mm x 3560mm	15' 1" x 11' 8"
Total internal area	58 sq m	627 sq ft
Terrace	9405 x 1635mm	30' 10" x 5' 4"
Total external area	15 sq m	157 sq ft