

# CUI

CITY & URBAN INTERNATIONAL

**Townmead Road, London, SW6**

**£8,196 pa**



## Full Description

Situated on the first floor of Station Court Business Centre we have a modern, open plan, air-conditioned office with suspended ceilings, raised access flooring and full height glazing to the rear. The suite has recently been redecorated and re-carpeted and it also benefits from outside patio area.

## Features

- Comfort cooling/heating
- Full accessible raised floor for cabling
- Open plan layout
- Kitchen (shared with one other company) Communal Lift/staircase
- Car parking for 1 vehicle (additional charge)
- Communal Wc`s and Shower

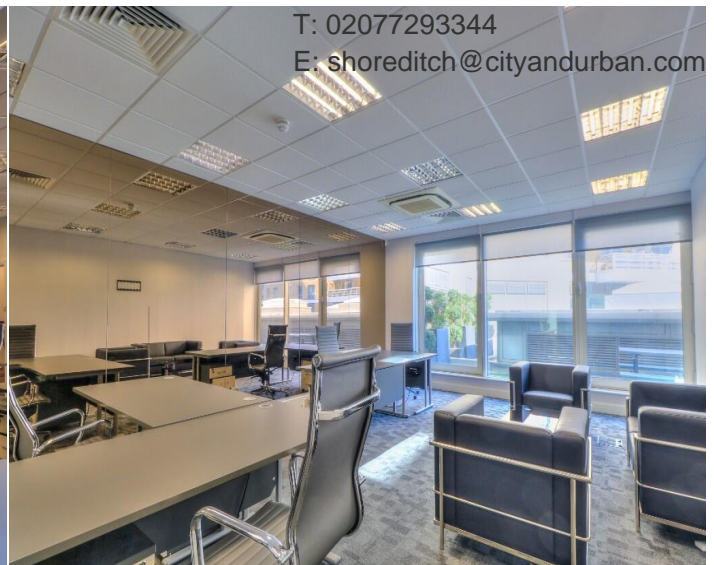
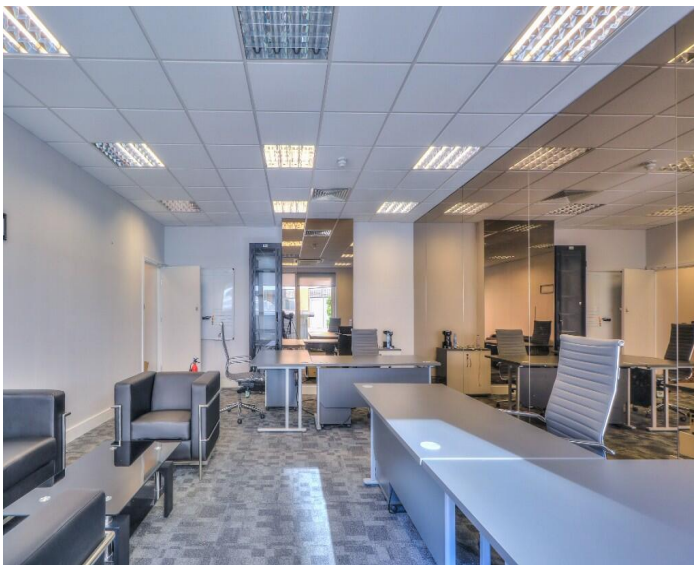
## Contact Us

### CUI

25 Phipp Street, London  
EC2A 4NP

T: 02077293344

E: [shoreditch@cityandurban.com](mailto:shoreditch@cityandurban.com)



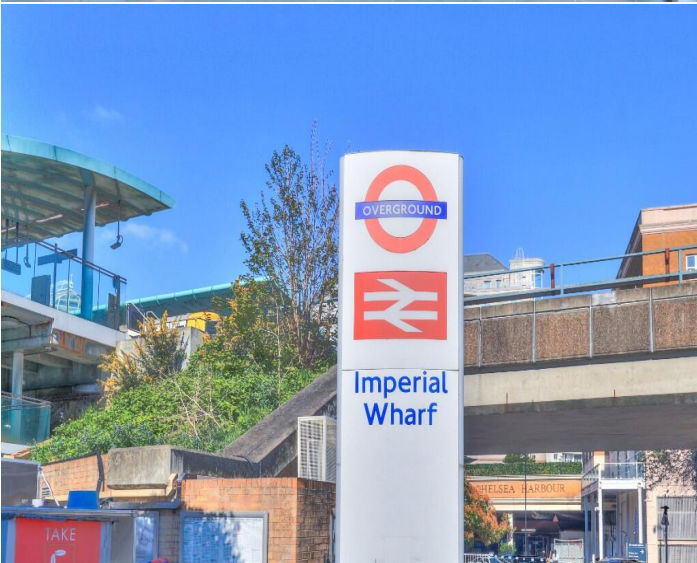
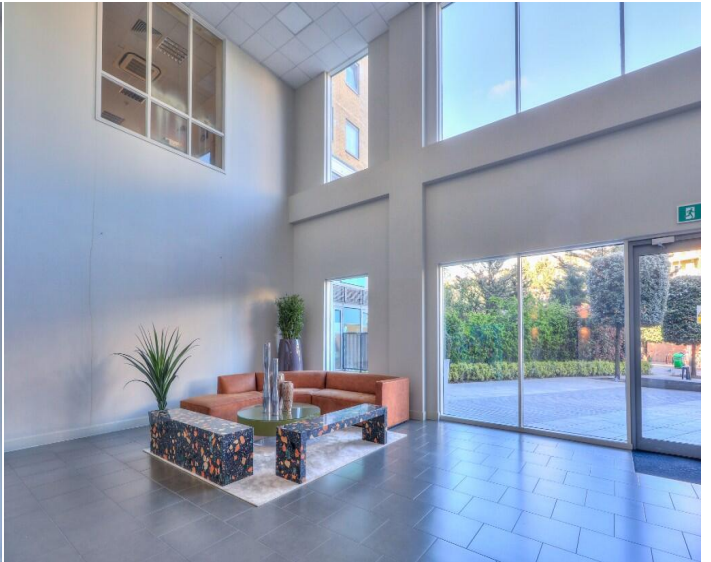
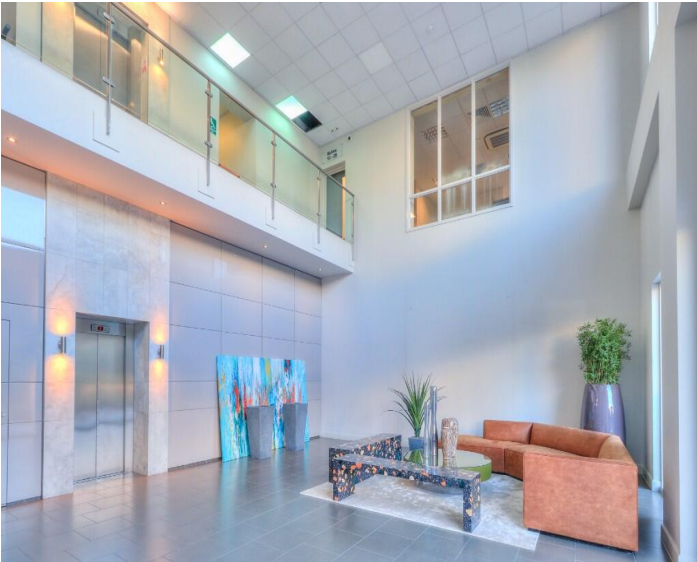


Image not found or type unknown

