

CUI

CITY & URBAN INTERNATIONAL

Tower Bridge Road, London, SE1

£8,333 pcm



Full Description

Restaurant Situated in an excellent position this 4,090 sq. ft restaurant/bar in a Grade II Listed former bank building on the corner of Tower Bridge Road and Tooley Street. The space has a sleek and stylish design and has been decorated to very high standards.

Benefits from excellent natural light, high ceilings, many original features, excellent footfall, boasts private dining rooms, high spec bar and kitchen, 130 covers. 200m from Tower Bridge, 800m from London Bridge Station, and within easy walking distance of Tower Hill, Bermondsey and Borough stations. Nearby operators include Sainsbury's, JD Weatherspoon, Vapiano, Gunpowder, The Raven, Restaurant Story.

Accommodation Arranged over basement and ground floors, providing the following approximate areas: Ground Floor: 2,090 sq. Ft. Basement: 2,000 sq. Ft. Total Approx. Net Area 4090 sq. ft. Lease An assignment of an existing lease, at a current rent of £100,000 per annum, exclusive of rates and all other outgoings.

Term 15 years (inside the L&T Act 1954). Uses A3 + Alcohol license, Entertainment and Music licence. Rates Interested parties are asked to make their own enquiries with the Local Rating Authority. EPC An Energy Performance Certificate is available upon request.

Premium Offers invited for our client's valuable asset and prime location at £180k

Features

- Excellent natural light
- Many original features
- Boasts private dining rooms

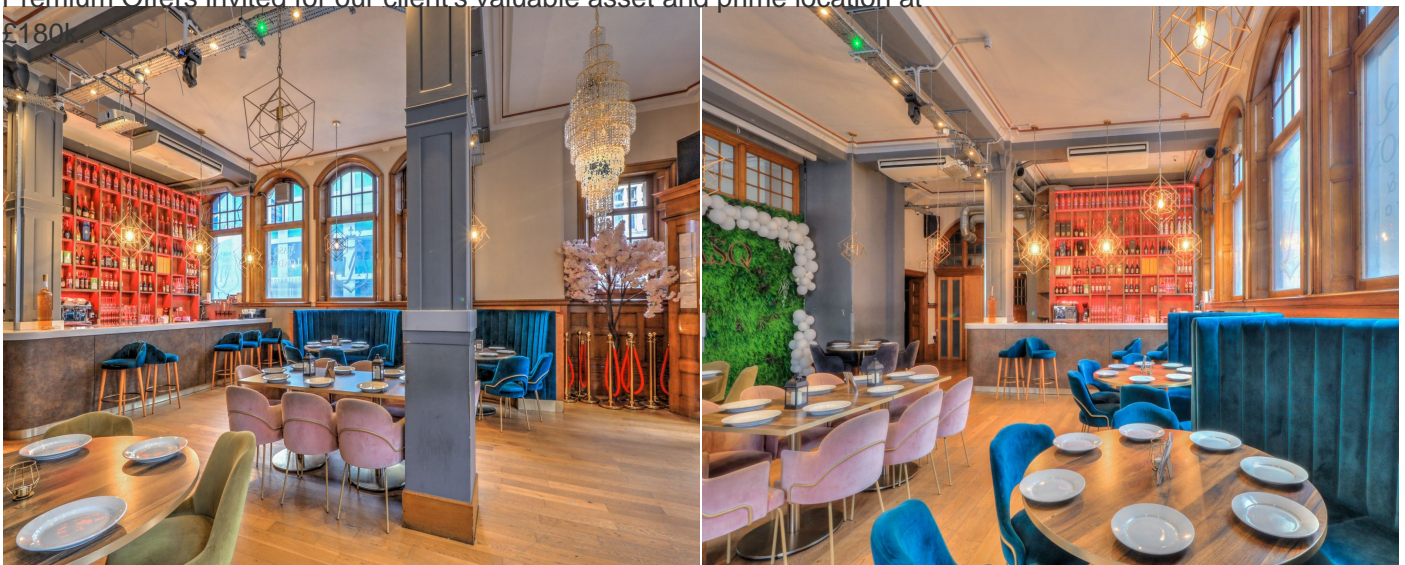
Contact Us

CUI

25 Phipp Street, London
EC2A 4NP

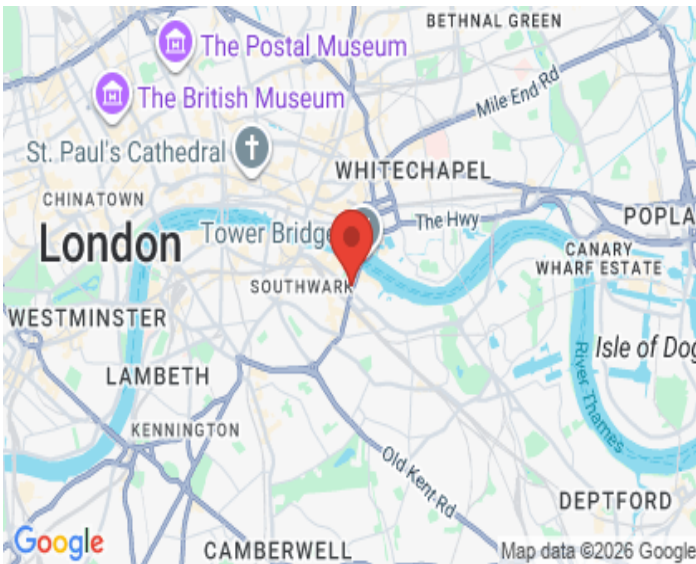
T: 02077293344

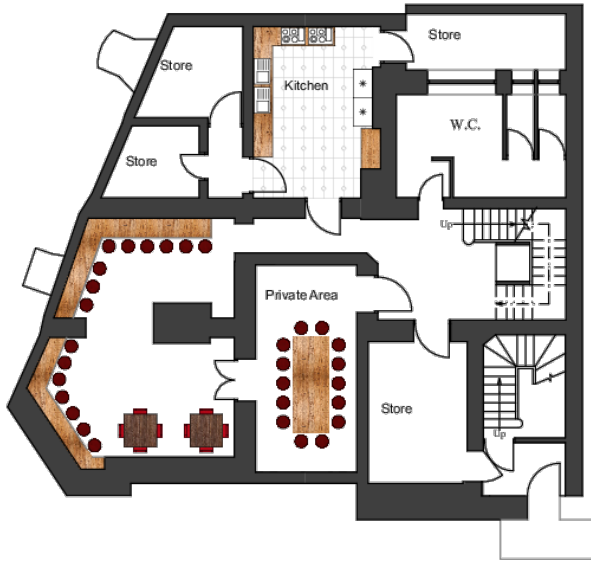
E: shoreditch@cityandurban.com



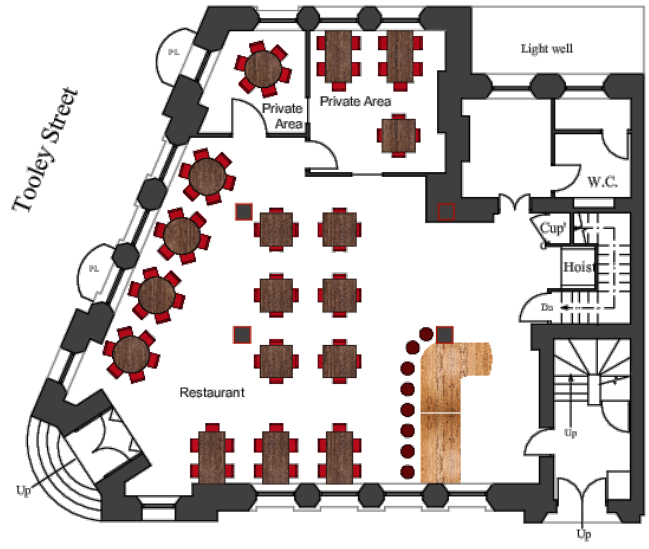








Proposed Basement plan



Tower Bridge Road

Proposed Ground Floor plan

