

# CUI

CITY & URBAN INTERNATIONAL

**The Grove, 124 The Grove, E15**

**£400,000**



## Full Description

A refined, newly built 1-bedroom home within The Grove Residence, a boutique development of just ten premium apartments in central Stratford.

Designed with modern living in mind, the property offers an open-plan layout, engineered oak flooring, floor-to-ceiling windows, and a private balcony. The Italian-designed kitchen features quartz worktops and integrated appliances, while the bedroom provides generous proportions and excellent natural light.

Residents benefit from lift access, video entry, and secure cycle storage.

Located moments from Stratford station, Westfield, Queen Elizabeth Olympic Park and Stratford's cultural quarter, this property combines lifestyle appeal with long-term value.

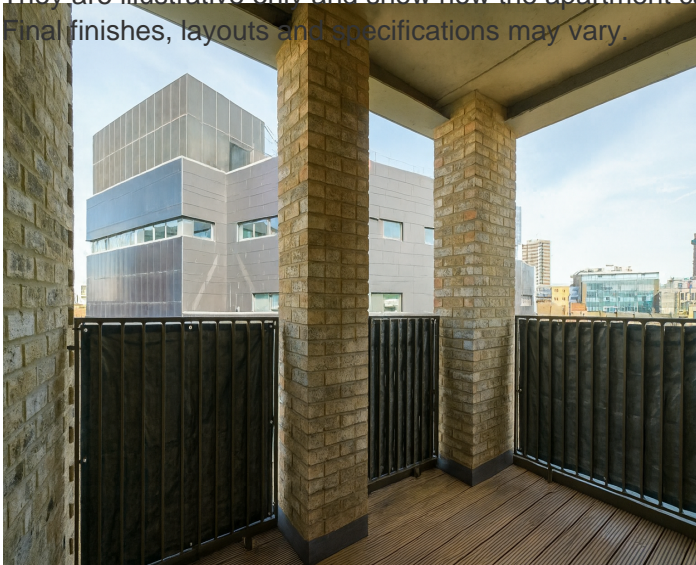
Lease Length: 999 years

Ground Rent: £250 per annum

Service Charge: £1750 per annum approx

Completion: Q1 2026

Some images are CGI representations created for marketing purposes. They are illustrative only and show how the apartment can be furnished. Final finishes, layouts and specifications may vary.



## Features

- Private balcony with composite decking
- Italian handle-less kitchen with quartz worktops
- Lift access, video entry and secure cycle storage
- Exceptional Stratford location with Elizabeth Line, Jubilee & Central lines nearby

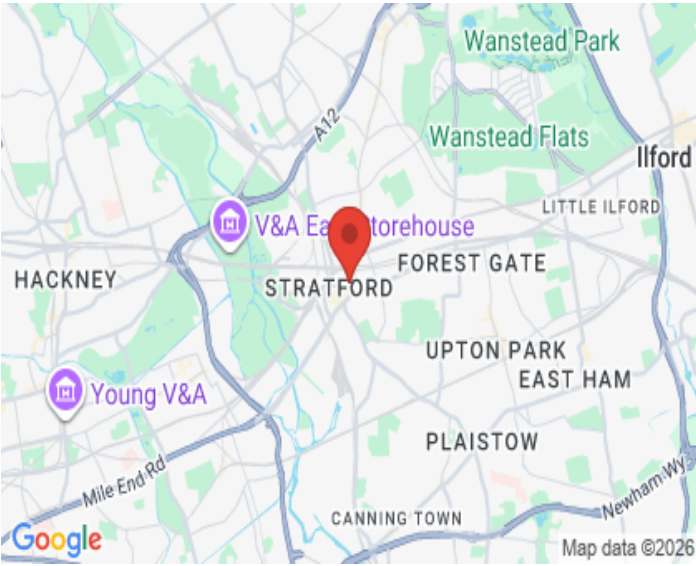
## Contact Us

### CUI

25 Phipp Street, London  
EC2A 4NP

T: 02077293344

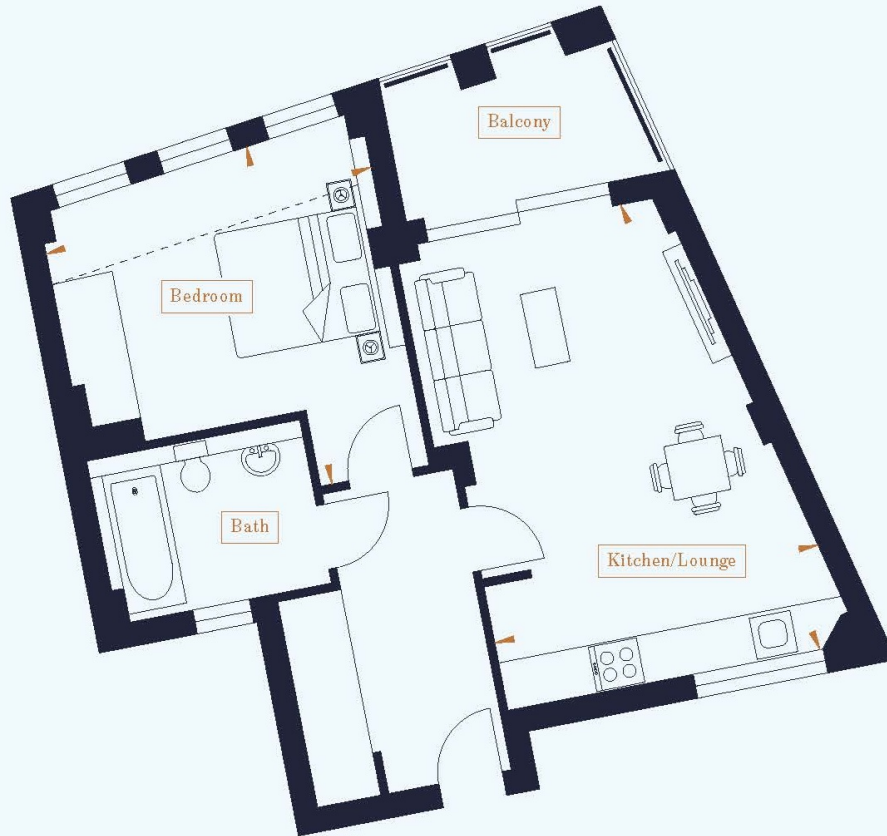
E: [shoreditch@cityandurban.com](mailto:shoreditch@cityandurban.com)



## Total Internal Area

53.2 m<sup>2</sup>

572.6 ft<sup>2</sup>



## 1 Bedroom Apartment

<b>Kitchen/Lounge</b>	6.05m x 4.47m	19'10" x 14'7"
<b>Bedroom</b>	4.49m x 4.19m	14'8" x 13'8"

## Key

<b>Cyl</b>	Cylinder
-----	Ceiling height 2500 - 2575 mm

Whilst every attempt has been made to ensure the accuracy of the floorplan contained here, measurements of doors, windows, rooms and any other items are approximate and no responsibility is taken for error, omission, or mis-statement. This plan is for illustrative purposes only and should be used as such by any prospective purchaser.