

CUI

CITY & URBAN INTERNATIONAL

Bethnal Green Road, London, E1

£60,000 pa



Full Description

A 3,050 sq ft lower ground floor unit in this character building well located near Shoreditch Station and Boxpark. The space benefits from very high ceilings, a mezzanine level with toilets and kitchenette. The property can be accessed via lift access through the main building, or via external stairs. It can operate for various uses, such as showroom, office or education facilities. Currently in shell condition but can be finished to a very high spec - Available immediately

High Ceilings

Attractive Building Entrance

Lower Ground Floor

3,050 Sq ft

Features

- 3,050 sq ft lower ground floor unit
- Mezzanine floor
- High Ceilings

Contact Us

CUI

25 Phipp Street, London
EC2A 4NP

T: 02077293344

E: shoreditch@cityandurban.com





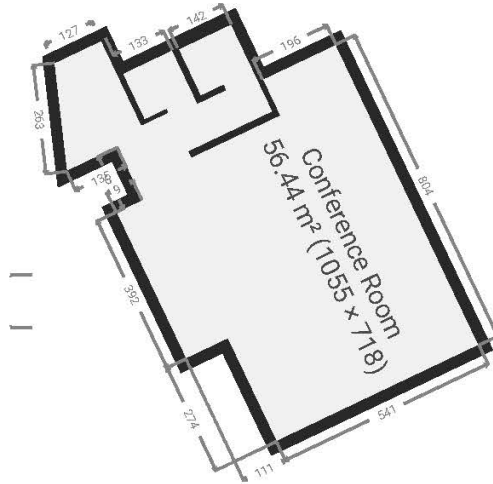


27-33 Bethnal Green rd

TOTAL AREA: 282.66 m² · LIVING AREA: 282.66 m² · FLOORS: 2 · ROOMS: 2

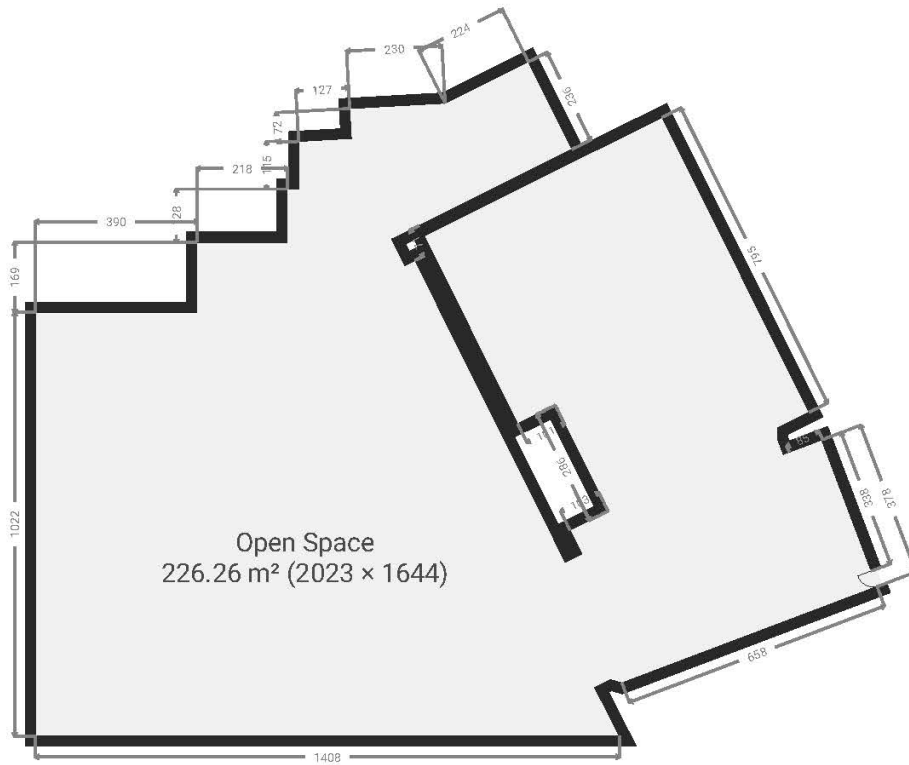
▼ Mezzanine

TOTAL AREA: 56.43 m² · LIVING AREA: 56.43 m² · ROOMS: 1



▼ Basement • Level 1

TOTAL AREA: 226.23 m² · LIVING AREA: 226.23 m² · ROOMS: 1



THIS FLOORPLAN IS PROVIDED WITHOUT WARRANTY OF ANY KIND. SENSOPIA DISCLAIMS ANY WARRANTY INCLUDING, WITHOUT LIMITATION, SATISFACTORY QUALITY OR ACCURACY OF DIMENSIONS.

