

# CUI

CITY & URBAN INTERNATIONAL

**Bateman's Row, London, EC2A**

**£2,350 pcm**



## Full Description

In the Middle of the Shoreditch triangle we find this large one bed flat.

Freshly modernised we have a much fresher look with integrated appliances and laminate floors. Access is via stairs or the large former cargo lift leading to generous hallways and shared porches.

The flat boasts doorstep access to the areas many lifestyle options, you couldn't be closer to shops, eateries and nightlife. The city sits just a short walk away, as do all the transport options for town or further afield.

Available part-furnished from 28th May

City & Urban Shoreditch are members of a client money protection scheme.

City & Urban Shoreditch are registered members of The Property Ombudsmen Redress Scheme.

## Features

- Available part-furnished from 28th May
- Located in the Shoreditch Triangle

## Contact Us

### CUI

25 Phipp Street, London

EC2A 4NP

T: 02077293344

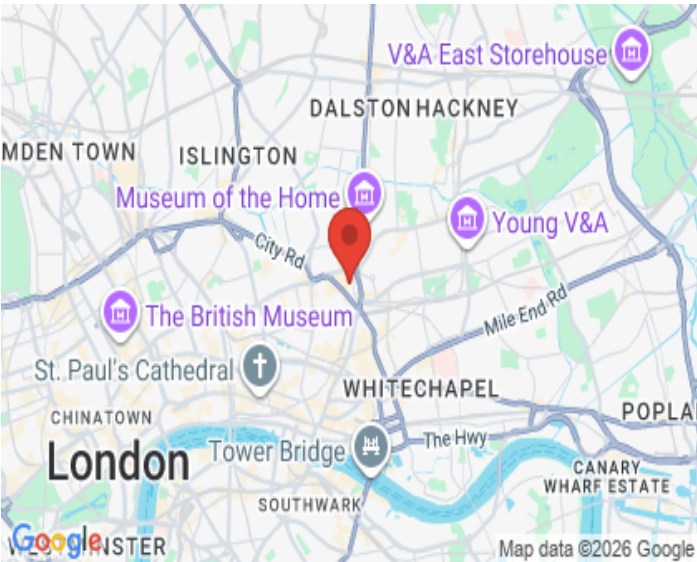
E: shoreditch@cityandurban.com

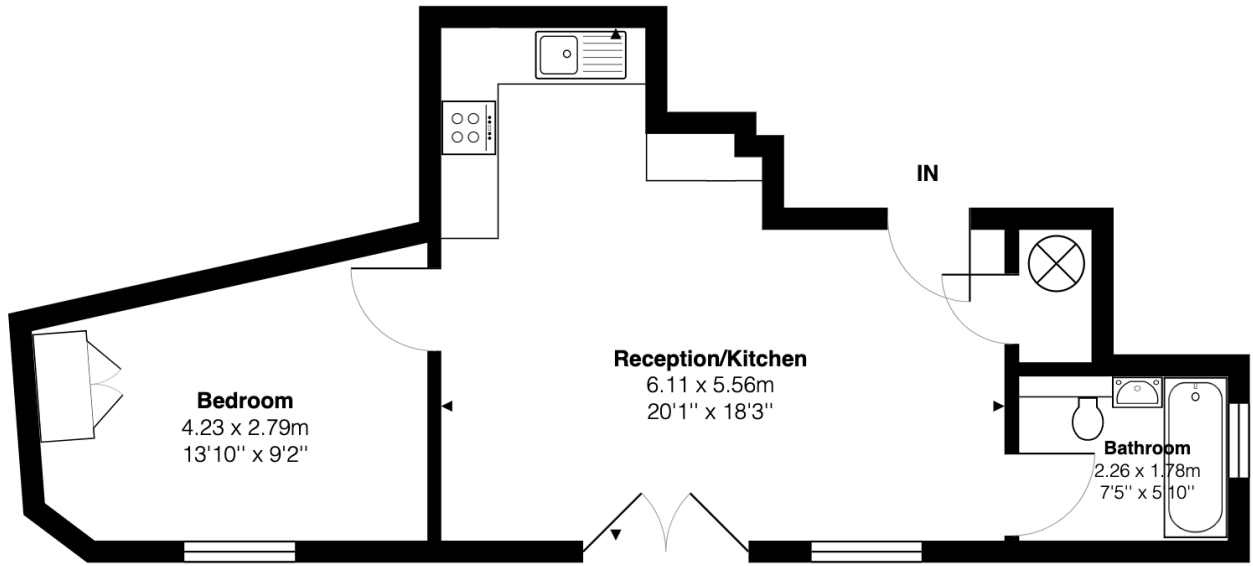




Energy Efficiency Rating		Current	Potential
Very energy efficient - lower running costs			
(92-100) <b>A</b>			
(81-91) <b>B</b>			
(69-80) <b>C</b>		80	80
(55-68) <b>D</b>			
(39-54) <b>E</b>			
(21-38) <b>F</b>			
(1-20) <b>G</b>			
Not energy efficient - higher running costs			
England, Scotland & Wales		EU Directive 2002/91/EC	

Environmental (CO <sub>2</sub> ) Impact Rating		Current	Potential
Very environmentally friendly - lower CO <sub>2</sub> emissions			
(92-100) <b>A</b>			
(81-91) <b>B</b>		84	84
(69-80) <b>C</b>			
(55-68) <b>D</b>			
(39-54) <b>E</b>			
(21-38) <b>F</b>			
(1-20) <b>G</b>			
Not environmentally friendly - higher CO <sub>2</sub> emissions			
England, Scotland & Wales		EU Directive 2002/91/EC	





Total Area: 44.3 m<sup>2</sup> ... 477 ft<sup>2</sup>

All measurements are approximate and for display purposes only